

# TOKYO

TEXTILE COLLECTION

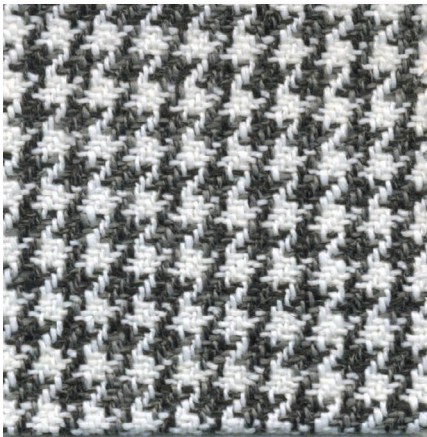


COLECCION  
**ALEXANDRA**

Finest Spanish Handicraft



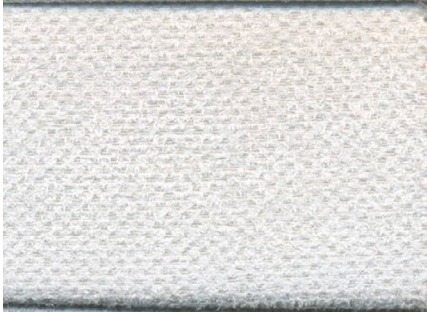
TOKYO 01  
F-6000



NAGANO 01  
F-6065



OSAKA 01  
F-6030



OSAKA 04  
F-6033



NAGANO 03  
F-6067



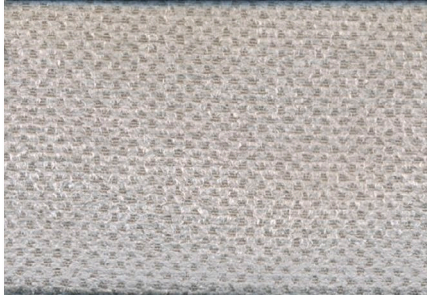
SHIBUYA 01  
F-6130



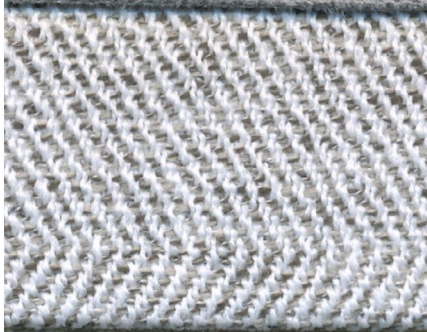
SENDAI 03  
F-6052



OSAKA 05  
F-6034



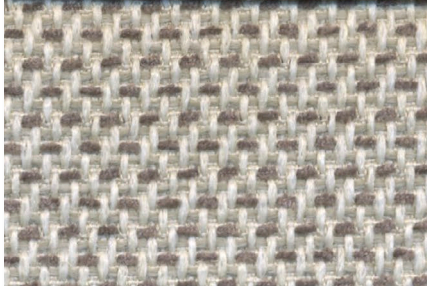
KOBE 03  
F-6017



SAPPORO 01  
F-6080



NAGOYA 01  
F-6110



SHIBUYA 02  
F-6131





OSAKA 02  
**F-6031**

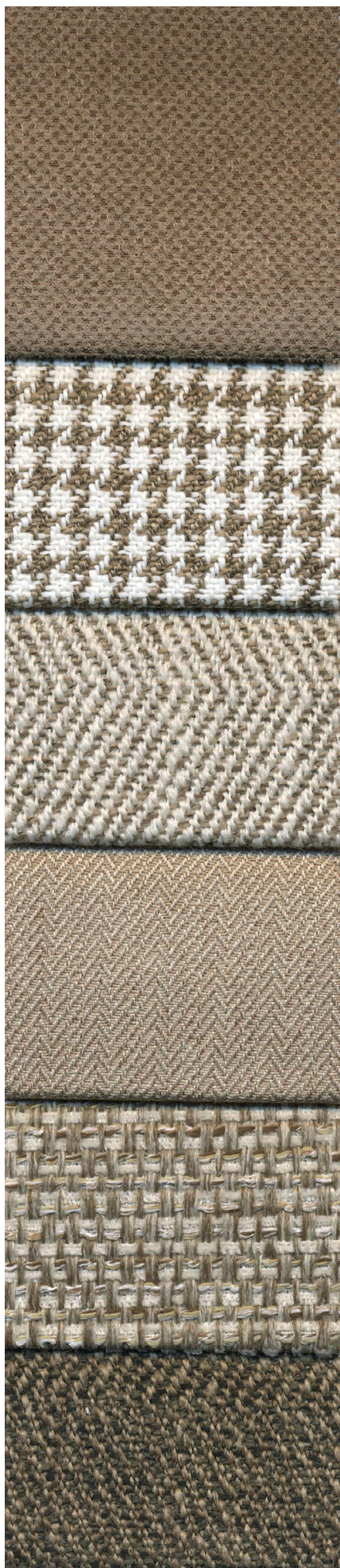
TOKYO 03  
**F-6002**

KOBE 04  
**F-6018**

SENDAI 01  
**F-6050**

OKINAWA 01  
**F-6090**

KOBE 05  
**F-6019**



NAGANO 02  
**F-6066**

TOKYO 02  
**F-6001**

SENDAI 02  
**F-6051**

KOBE 01  
**F-6015**

OSAKA 03  
**F-6032**

OKINAWA 02  
**F-6091**





NARITA 01  
F-6120



SENDAI 05  
F-6054



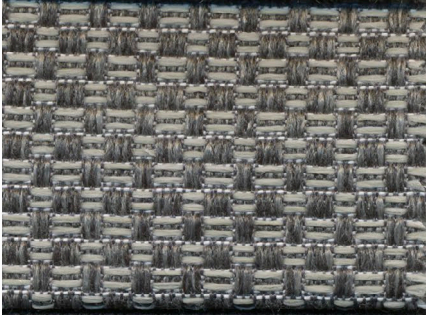
SAPPORO 02  
F-6081



OSAKA 06  
F-6035



SAPPORO 03  
F-6082



SENDAI 06  
F-6055



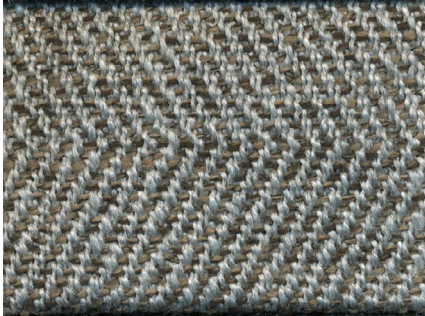
SENDAI 04  
F-6053



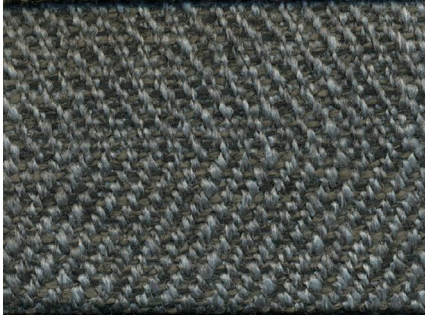
OSAKA 07  
F-6036



KOBE 02  
F-6016



KOBE 06  
F-6020



KOBE 07  
F-6021
















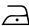














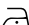













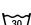
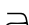



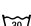


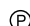


NAGANO 04  
F-6068





ESPECIFICACIONES TÉCNICAS

TECHNICAL SPECIFICATIONS

Árticulo Article	Composición Composition	Ancho Width	Martindale Martindale	Mantenimiento Care instructions
TOKYO	80% P 20% A	140	>30.000	     
KOBE	70% P 30% A	140	>30.000	     
OSAKA	100% P	145	50.000	    
SENDAI	100% P	142	90.000	    
NAGANO	100% P	142	70.000	    
SAPPORO	100% P	150	70.000	    
OKINAWA	100% P	149	25.000	    
NAGOYA	100% P	147	40.000	    
NARITA	100% P	143	100.000	    
SHIBUYA	70% P 30% A	140	>30.000	     

P: **Poliéster** Polyester    A: **Acrílico** Acrylic

INSTRUCCIONES DE LIMPIEZA

ELIMINACIÓN DE MANCHAS

Las manchas más comunes del hogar, como té, café, grasas, chocolate o zumo se pueden eliminar fácilmente frotando ligeramente el tejido con un paño limpio y un poco de agua jabonosa. Cuando la mancha haya desaparecido frote en seco con un paño suave y limpio. Déjelo secar a temperatura ambiente.

LAVADO DOMÉSTICO ELEMENTOS DESENFUNDABLES

Lave las fundas dándoles la vuelta, cerrando las cremalleras o cubriendo el velcro. Lavar a 30°C con un programa de lavado para prendas delicadas, usando detergentes neutros sin añadir suavizantes. Centrifugar al mínimo. No lavar las fundas con otras prendas o tejidos.

SECADO

Después del lavado, y con la funda aún húmeda, extiéndala y estire suavemente en ambas direcciones. Deje secar a temperatura ambiente evitando la exposición directa al sol. Asegúrese de que la funda esté completamente seca antes de su uso.

CLEANING INSTRUCTIONS

STAIN REMOVAL

Common household stains like tea, coffee, grease, chocolate or fruit juice are easily removed with a clean cloth and some soapy water. When the stain has disappeared rub dry with a clean cotton cloth. Allow to dry at room temperature.

DOMESTIC WASHING OF REMOVABLE COVERS

Wash the covers inside out and with the zipper or velcro closed. Wash at 30°C with a washing program for delicate garments, using neutral detergents and no softener. Select a low spin cycle. Do not wash with other textiles or garments.

DRYING

After machine washing and with the cover still damp, stretch in both directions. Dry at room temperature. Avoid direct exposure to sunlight. Always ensure that the cover is completely dry before use.



# TOKYO

TEXTILE COLLECTION